

## SCA Guideline

### 1 Content

1	Content.....	1
2	Introduction .....	1
3	Consult configuration .....	2
4	Read configuration .....	4
5	Write configuration .....	6
6	Save configuration.....	7
7	Open configuration.....	8
8	Restore configuration.....	9
9	Print configuration .....	10

### 2 Introduction

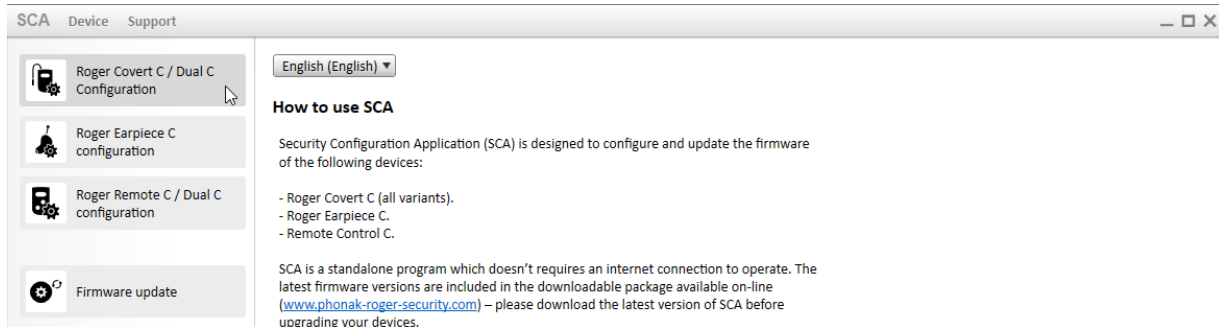
The present document describes how to consult, read, write, save, open and restore a Roger Covert C (all variants) configuration.

To perform read, write and restore, it's required that a Roger Covert C (any variants) is connected to your computer with the USB cable provided along the device.

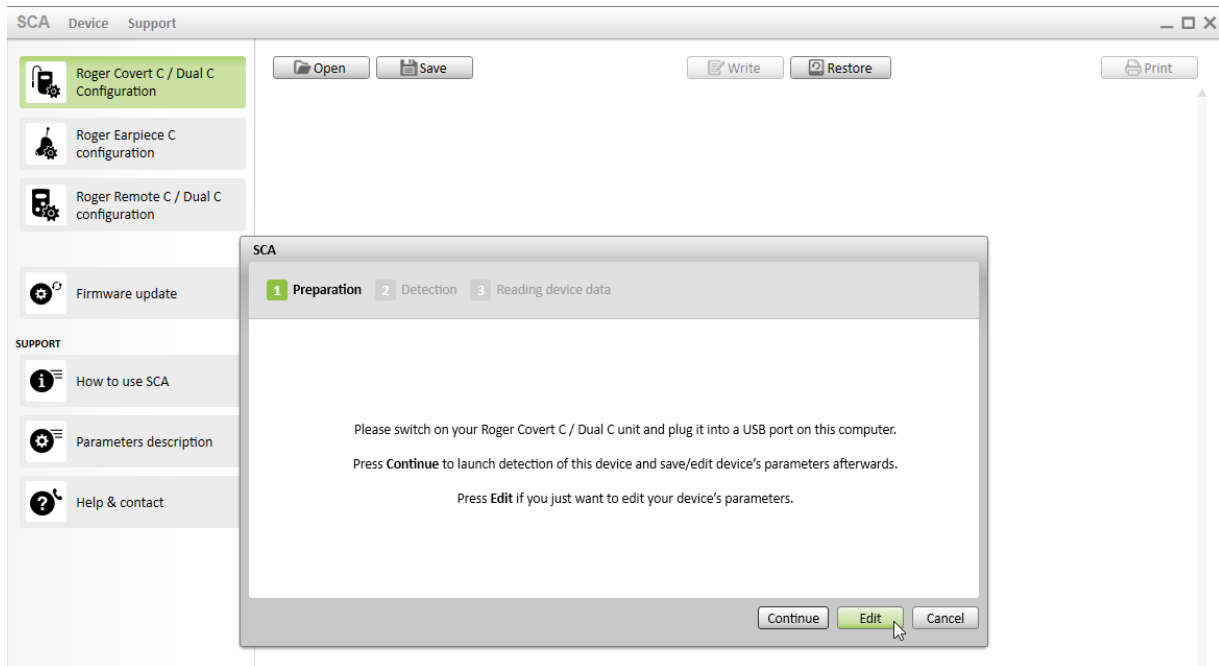
## 3 Consult configuration

Consult a Roger Covert C (all variants) configuration without having a device connected

1. Click on "Roger Covert C / Dual C Configuration"



2. Then click on "Edit" in the pop-up window



- A list of parameters with default values will be displayed in the SCA fields

The screenshot shows the SCA configuration software interface. The window title is 'SCA Device Support'. On the left, there is a sidebar with navigation options: 'Roger Covert C / Dual C Configuration' (selected), 'Roger Earpiece C configuration', 'Roger Remote C / Dual C configuration', 'Firmware update', and a 'SUPPORT' section with 'How to use SCA', 'Parameters description', and 'Help & contact'. The main area contains a list of configuration parameters with their current values and default settings:

- Client first name:
- Client name:
- Bluetooth Device Name:
- Microphone sensitivity:  normal (default)  high
- Rx beep:
- Volume adjustment beep:
- Vibrator control:
- Tone feedback:
- Tone delay:  0.5"  1" (default)  2"
- Default priority channel:  CH1 (default)  CH2
- Simultaneous beep:
- Wired output level:  0dB (default)  -3dB  -6dB  -9dB  -12dB
- Bluetooth:
- Bluetooth PTT command:  None (default)  STP/SC series  TPH900
- Push To Talk CH1:
- Push To Talk CH2:
- End of call notification:
- Product name:

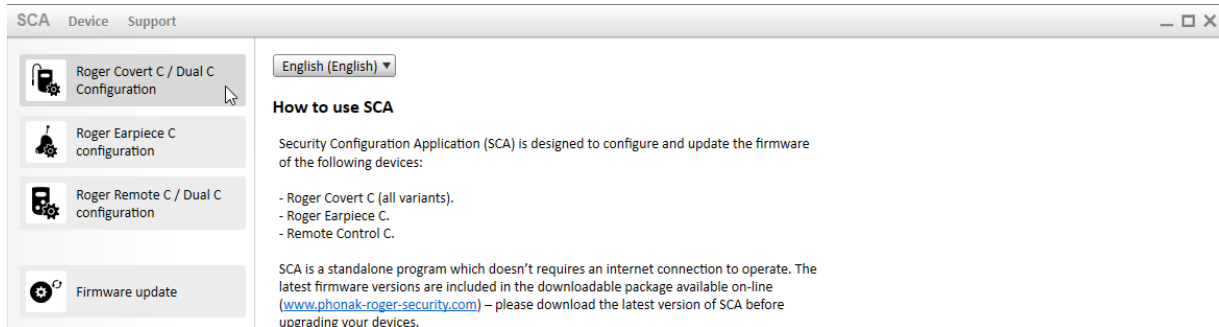
At the top of the main area, there are buttons for 'Open', 'Save', 'Write', 'Restore', and 'Print'.

- To continue with another operation, refer to dedicated section of this document

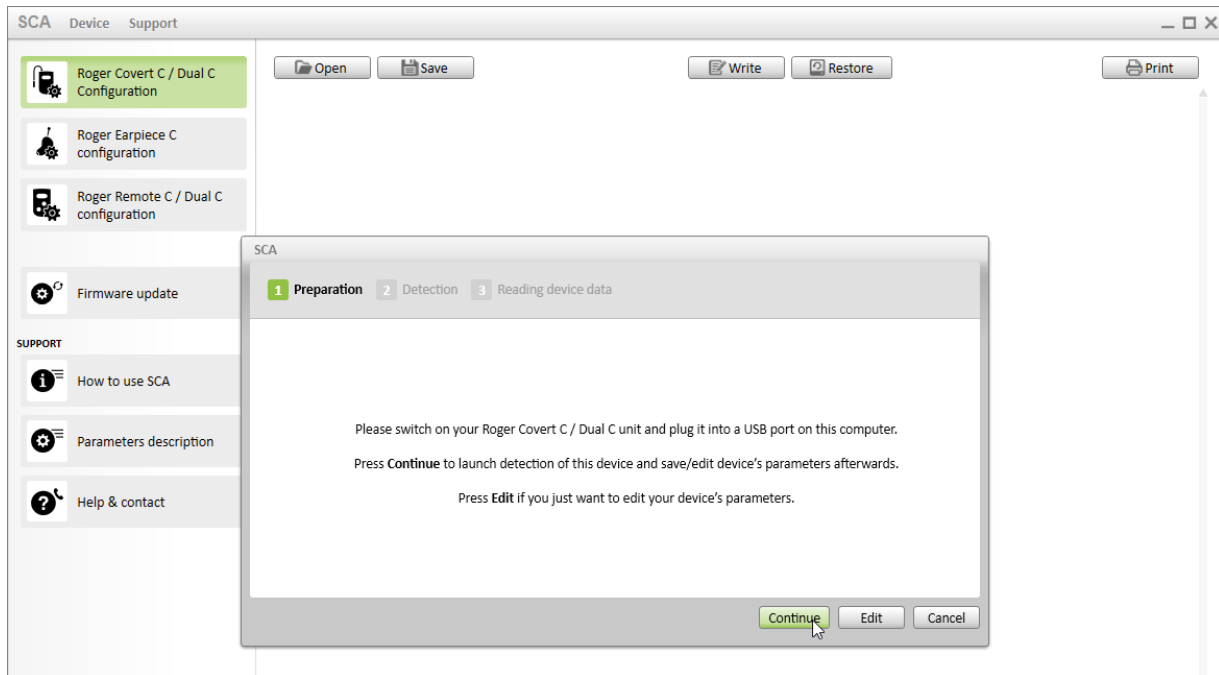
## 4 Read configuration

Read a Roger Covert C (all variants) device configuration

1. Click on "Roger Covert C / Dual C Configuration"



2. Then click on "Continue" in the pop-up window



### 3. The device parameters will be read and displayed in the SCA fields

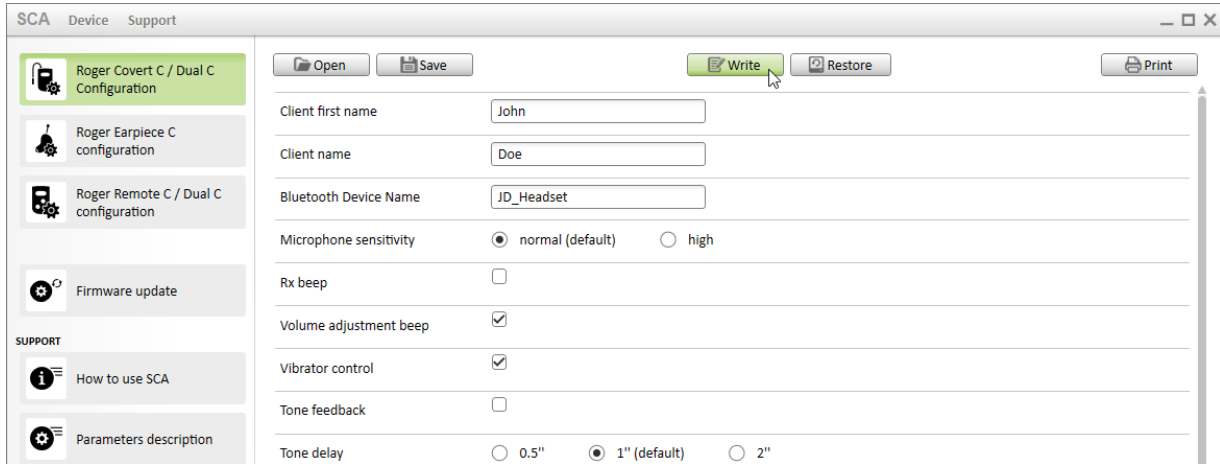
The screenshot shows a software window titled "SCA Device Support" with a sidebar on the left and a main configuration area on the right. The sidebar contains several menu items: "Roger Covert C / Dual C Configuration" (highlighted), "Roger Earpiece C configuration", "Roger Remote C / Dual C configuration", "Firmware update", and a "SUPPORT" section with "How to use SCA", "Parameters description", and "Help & contact". The main area has buttons for "Open", "Save", "Write", "Restore", and "Print" at the top. Below these are various configuration fields:

- Client first name:
- Client name:
- Bluetooth Device Name:
- Microphone sensitivity:  normal (default)  high
- Rx beep:
- Volume adjustment beep:
- Vibrator control:
- Tone feedback:
- Tone delay:  0.5"  1" (default)  2"
- Default priority channel:  CH1 (default)  CH2
- Simultaneous beep:
- Wired output level:  0dB (default)  -3dB  -6dB  -9dB  -12dB
- Bluetooth:
- Bluetooth PTT command:  None (default)  STP/SC series  TPH900
- Push To Talk CH1:
- Push To Talk CH2:
- End of call notification:
- Product name:

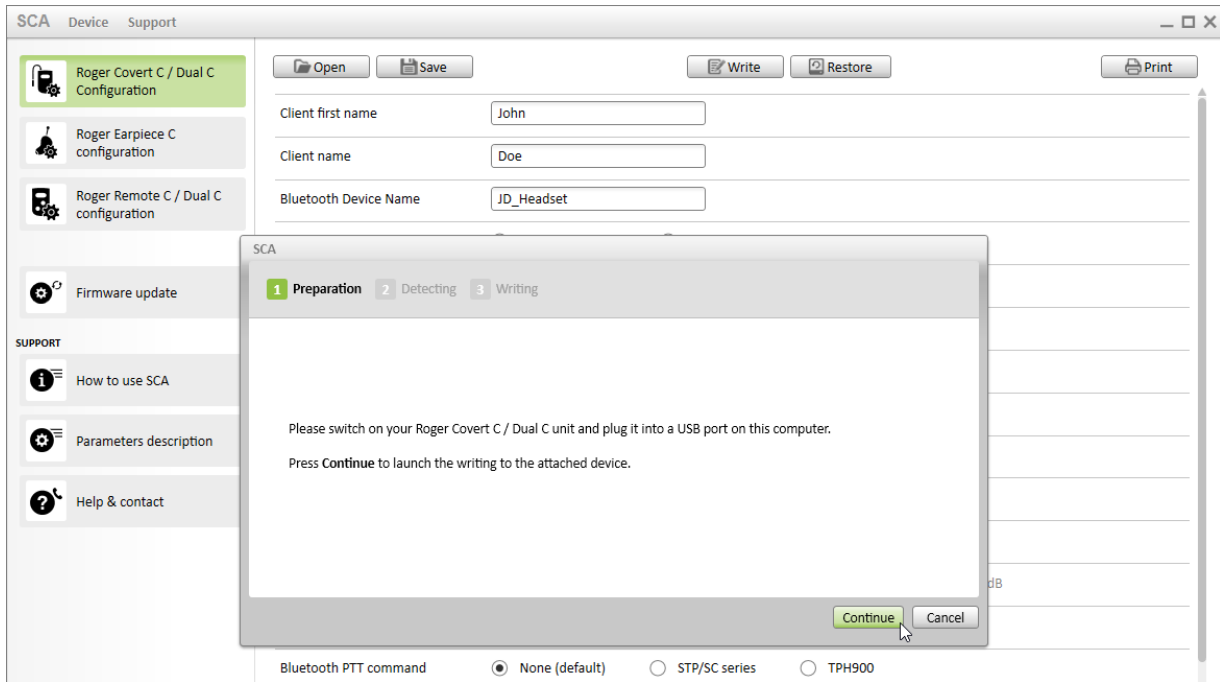
## 5 Write configuration

Write Roger Covert C (all variants) with parameters as currently displayed in fields. (Note: Read-only parameters will not be written).

1. Once the parameters have been set to your preference, click on write



2. Then click on "Continue" in the pop-up window

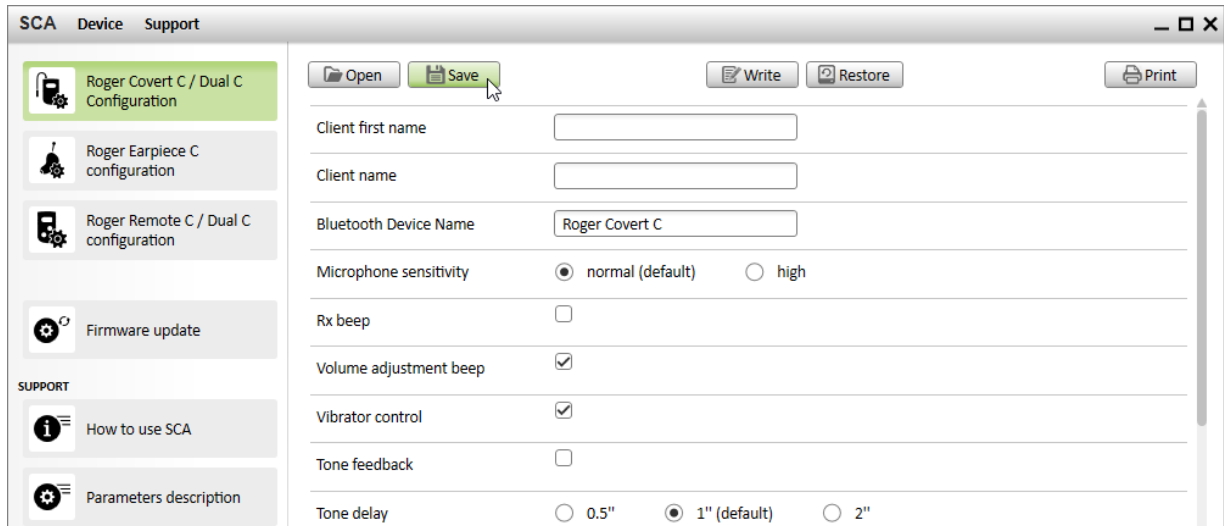


3. Once operation is achieved, pop-up menu will automatically close

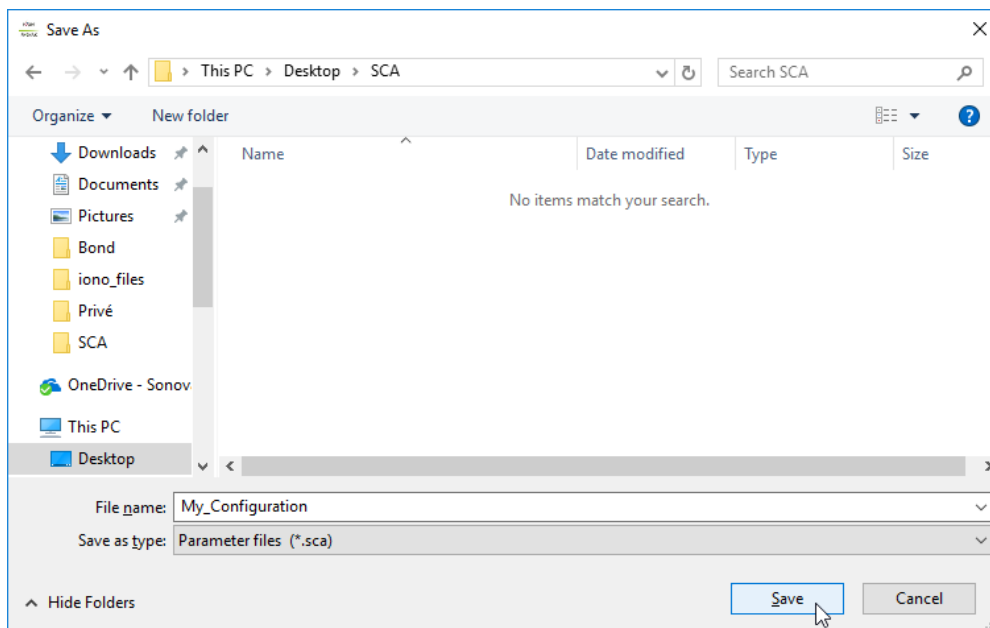
## 6 Save configuration

Save configuration, as currently displayed in fields, in a file on your storage drive.

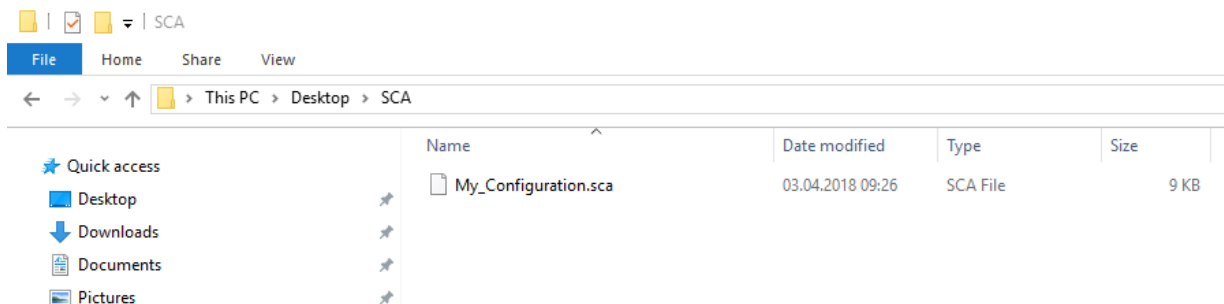
1. Once configuration has been read from attached device or set to your preference by editing default fields, click on "Save"



2. Then select the location where the file will be stored and give a name to your file and click "Save"



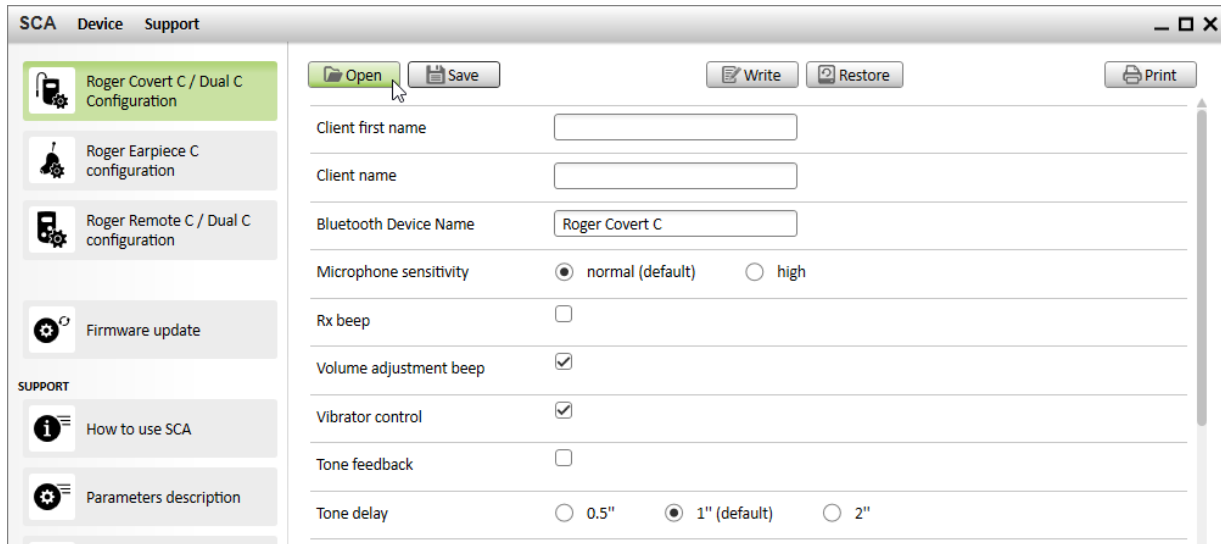
3. A file with .sca extension will be created



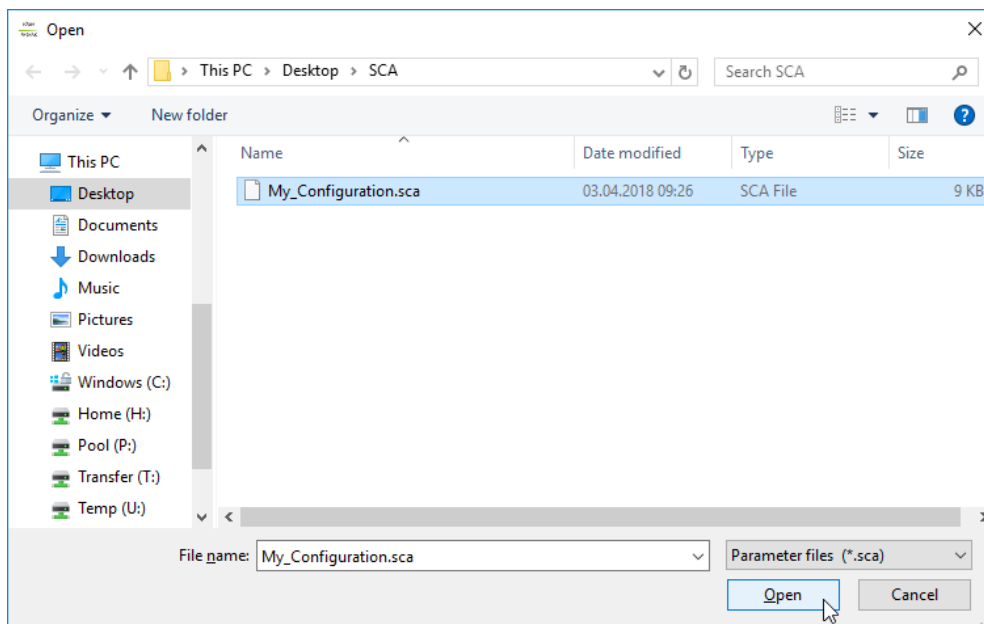
## 7 Open configuration

Open configuration file previously saved on your storage drive. Fields are updated but parameters are not applied to Roger Covert C (all variants).

1. Once you have a configuration file stored your storage drive, you can recall it by clicking on "Open"



2. Select the file you would like to open

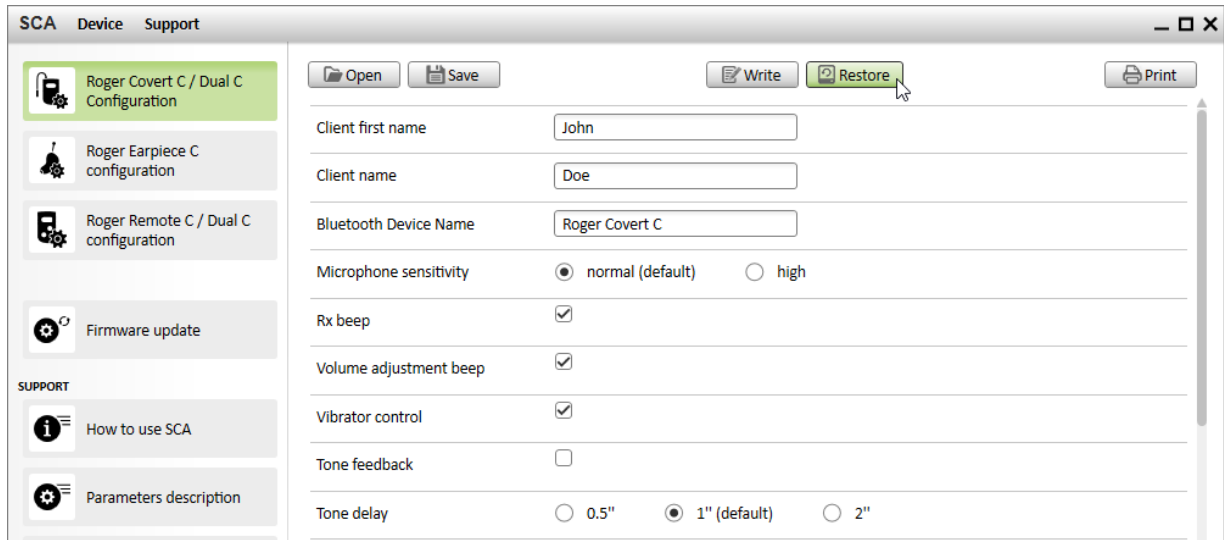




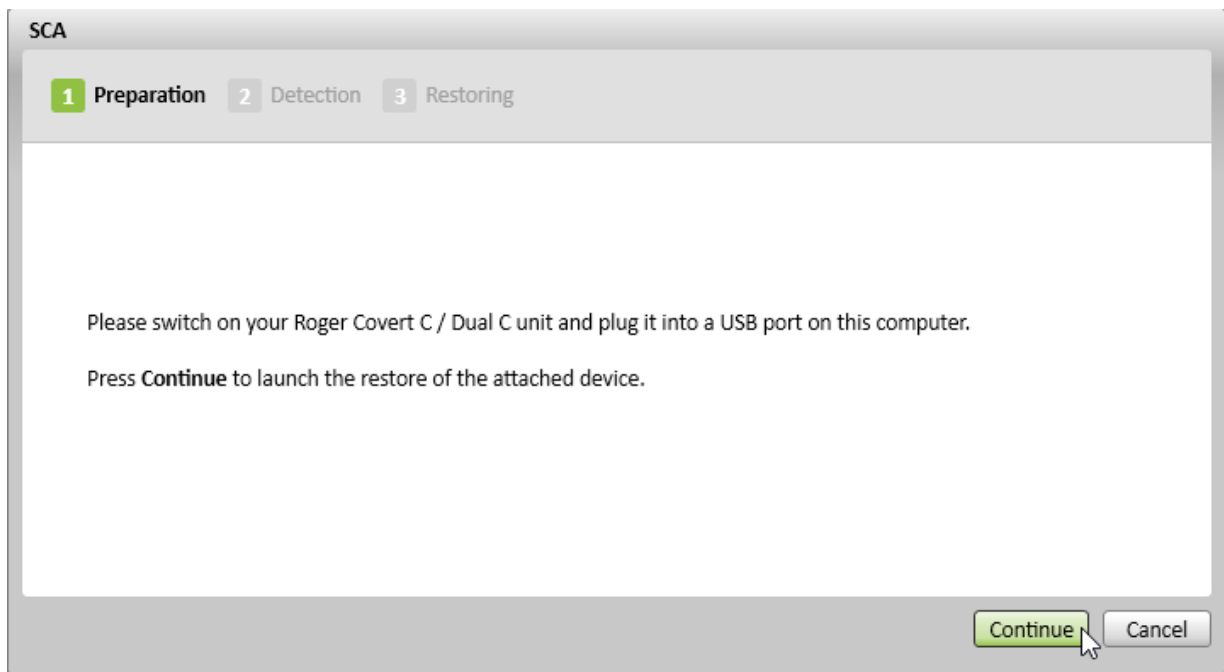
## 8 Restore configuration

Restore Roger Covert C (all variants) to factory default parameters. (Note: Only the parameters on the unit are restored – the fields values shown in the SCA will not be changed).

1. Click on "Restore"



2. Then on click on "Continue" in the pop-up window

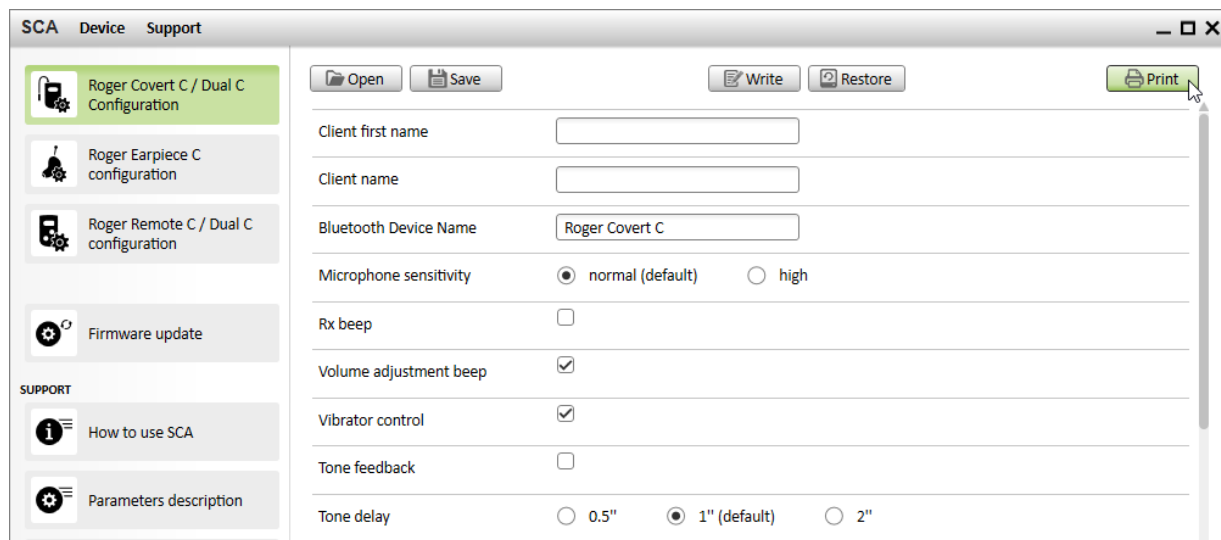


3. Once operation is achieved, pop-up menu will automatically close

## 9 Print configuration

*Print configuration as currently displayed in fields.*

1. Click on "Print"



2. Select your local printer in the pop-up menu