

Phonak invisity Programming Software 1.0



User Manual



Introduction

The Phonak invisity Programming software is a flexible and intuitive tool that allows you to program your clients invisity receivers.

Full mobility is reached by using portable computers and the programming unit connected to it. No external power supply is required.

The receivers are directly detected and the stored data can be viewed, modified and saved. Moving data from one receiver to another is possible within the same family.

To use the invisity Programming Software you need:

1. Personal computer or laptop with USB
2. invisity Programming Unit cable connected to a USB port. (052-3384)
3. Phonak invisity Programming Unit attached to the invisity Programming cable. (052-3383)

System requirements

To run the invisity Programming Software, a 32 bit Windows version is required with support for USB, such as:

Windows 98, Second Edition

Windows ME

Windows 2000

Windows XP Home

Windows XP Pro

Space on the hard disk:

Minimum 20 MB. Our recommendation is 100 MB

CD ROM drive

Minimum RAM: 64 MB

Minimal display resolution: 800x600

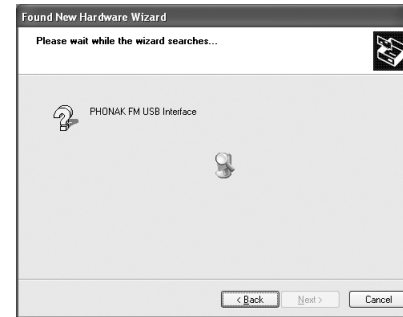
Installation procedure

Software installation on the local personal computer:

1. For Windows systems with access control: ensure that you are logged in as «Administrator».
2. Place the installation disc in the CD-ROM or floppy disk drive.
3. If auto-run is enabled in the system, the installation procedure will start automatically. Else start the program «setup.exe» located in the root of the CD-ROM
4. Follow the instructions. The copying of the files and the registration will start.
5. Connect the invisity Programming Unit cable to a free USB port. The «Found New Hardware Wizard» will start. The screenshots will be somehow different if working with a different Window system.
6. Accept the automatic installation:



or eg Windows 98SE



1. The search of the driver starts



or for Windows 98SE



2. If you must locate the driver, select the driver «ftd2xx.inf» located in the root directory of the CD-ROM



or eg for Windows 98SE



3. When prompted for the certificate of the driver, click on «Continue anyway» without searching for the certificate.



or for Windows 98SE

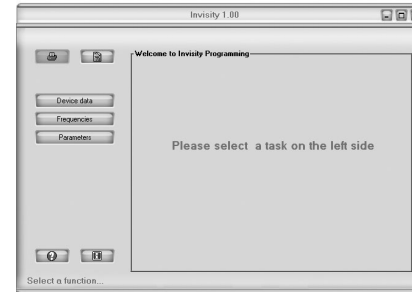






4. After completion, close the window




Note that the driver can be uninstalled from within the control panel 'Add/remove software'

Start and configuration

To start the installed software, click on the «invisity (IPU)» icon or menu which have been installed onto your desktop and in the start menu «Programs/Phonak Communications»

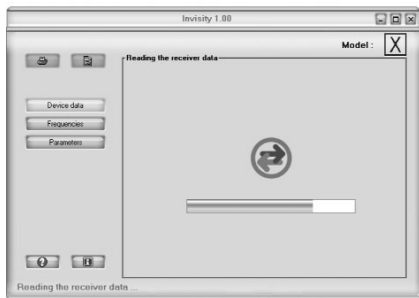


- Click on the printer button  for displaying the report preview before printing. The «Printer» button is only active after reading data from a receiver
- Click on the paper button  for entering your logo/address and comment for formatting the report. . Copy the text from an editor like WordPad and paste it in this field. This field accepts also pictures and text formatting.
- Click the help button  for help contents
- Click the information button  for displaying the «About» message with the current software version

- Click on a main button on the left side for starting the reading of the receiver data:
- Click on button «Device data»  for loading and displaying the type of the receiver and the user fields
- Click on button «Frequencies»  for loading and displaying the stored frequencies of the receiver
- Click on button «Parameters»  for loading and displaying the volume settings and the beep

Read and save data of receivers

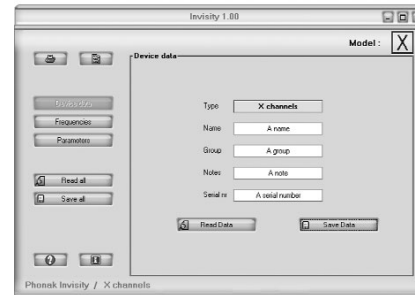
The first time the receiver is inserted, all data will be read, then depending on the selected button, the related page will open. After reading the data, go directly to other pages for viewing and modifying the data.



The flashing arrows icon in the middle of the data frame indicate the data transfer to the receiver.

Reading and Saving data can be achieved either globally for all pages, or can be shown only for the displayed page:

- Buttons «Read all» and «Save all» will do a global action
- Buttons in the data frame on the right side «Read...» And «Save...» will only read and save the data displayed in the frame.







- Click on button «Read all» for reloading all data of the device inserted in the invisity Programmer Unit.
- Click on button «Save all» for saving all data to the device inserted in the invisity Programmer Unit.

The data transfer for global reading and saving is indicated with the progress bar and the flashing arrows icon:

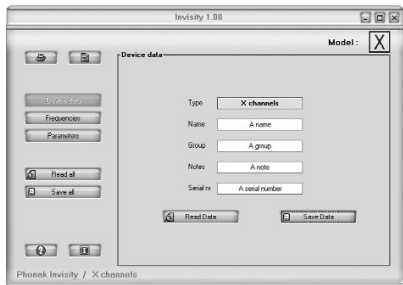


Device data

The device data page displays the type of the receiver from which data has been read.

-  1 fix programmed frequency
-  1 reprogrammable frequency
-  4 frequencies can be stored
-  Multi-Frequency can store up to 20 frequencies

The type of the receiver is displayed in the top right corner as «Model» with the standard icon of the receiver type.



Flex and multi-frequency devices will also display some fields for storing information in the device :

Name: up to 16 characters for storing eg a name

Group: up to 16 characters for storing eg a group name

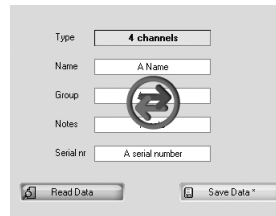
Note: up to 16 characters for storing information

Serial number : up to 16 characters for storing eg the serial number of the receiver

These fields can be modified and stored in the receiver. If a field has been modified, a star will be added to the buttons «Device data*» and «Save data*», indicating that there are unsaved values.





- Click on button «Read Data» for rereading the stored data in the receiver
- Click on button «Save Data» for saving the data in the receiver. The receiver can be different from the one from which reading happened. This allow to copy data from a receiver to another one.

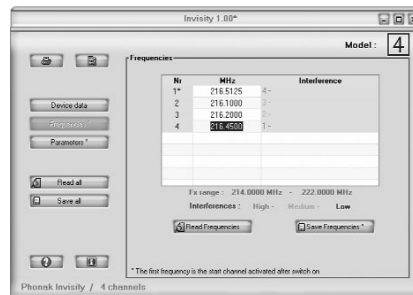
The data transfer is indicated with the flashing arrows icon :



Frequencies

Depending on the type of the receiver, frequencies have the flexibility to be reprogrammed:

-  1 channel fix: the frequency can not be reprogrammed
-  1 channel flex: 1 frequency can be programmed
-  4 channels flex: 4 frequencies can be programmed
-  X channels flex: 20 frequencies can be programmed



Modification of a frequency : click in the frequency field and enter the new value.

The new frequency must fit in the possible range of the receiver (displayed below the frequency table).

The value of the frequency must be rounded to a valid step: either 0.0050 MHz, 0.01 MHz or 0.0125 MHz.

Example for valid frequency steps :

174.16 : rounded to 0.01 MHz

174.365 : rounded to 0.005 MHz

174.4125 : rounded to 0.0125 MHz

If 2 or more frequencies are interfering, then the line numbers of all interfering frequencies are displayed.

The interference is depending on the transmitters involved.

If a frequency has been modified, a star will be added to the buttons «Frequencies *» and «Save Frequencies *», indicating that there are unsaved values.

- Click on button «Read Frequencies» for rereading the stored frequencies from the receiver
- Click on button «Save Frequencies» for saving the displayed frequencies to a receiver. The receiver can be different from the one from which reading happened. This allow to copy frequencies from a receiver to another one.

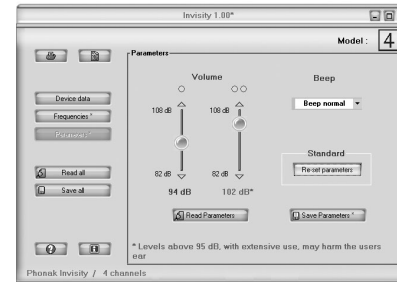
The data transfer is indicated by the flashing arrows icon.

Parameters

Multi-frequency receivers can be set at 2 output levels (1-dot and 2-dot positions) and a beep giving feedback to remote control commands.

The minimal step of the «Volume» is 2dB. A warning message indicates that a volume set to higher than 95 dB can damage the ear.

- Click on the button «Re-set parameters» for setting default output levels and a normal beep.



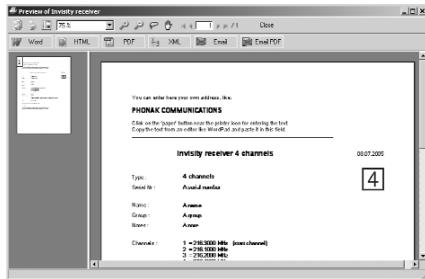
If a parameter has been modified, a star will be added to the buttons «Parameters*» and «Save Parameters*», indicating that there are unsaved values.

- Click on button «Read Parameters» for rereading the stored parameters from the receiver
- Click on button «Save Parameters» for saving the displayed parameters to a receiver. The receiver can be different from the one from which reading happened. This allow to copy parameters from a receiver to another one.

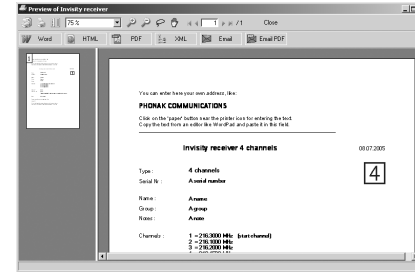
Reporting

Before using the reporting, you can set the options for entering your logo, address and a comment.

- Click on the paper button and set the options for the report formatting



- Tick or untick the checker for adding the logo and the comment to the reports
- The texts can be modified in a standard text programm like WordPad
- Click on the printer button for opening the report. This button is only active if valid data have been read from a receiver.



The report can be printed by clicking on the printer icons in the top left corner.

There are many other format available, like:

- Word
- HTML
- PDF

Help

- Click the help button  for help contents



- Click «F1» for displaying the contextual help of the current screen

